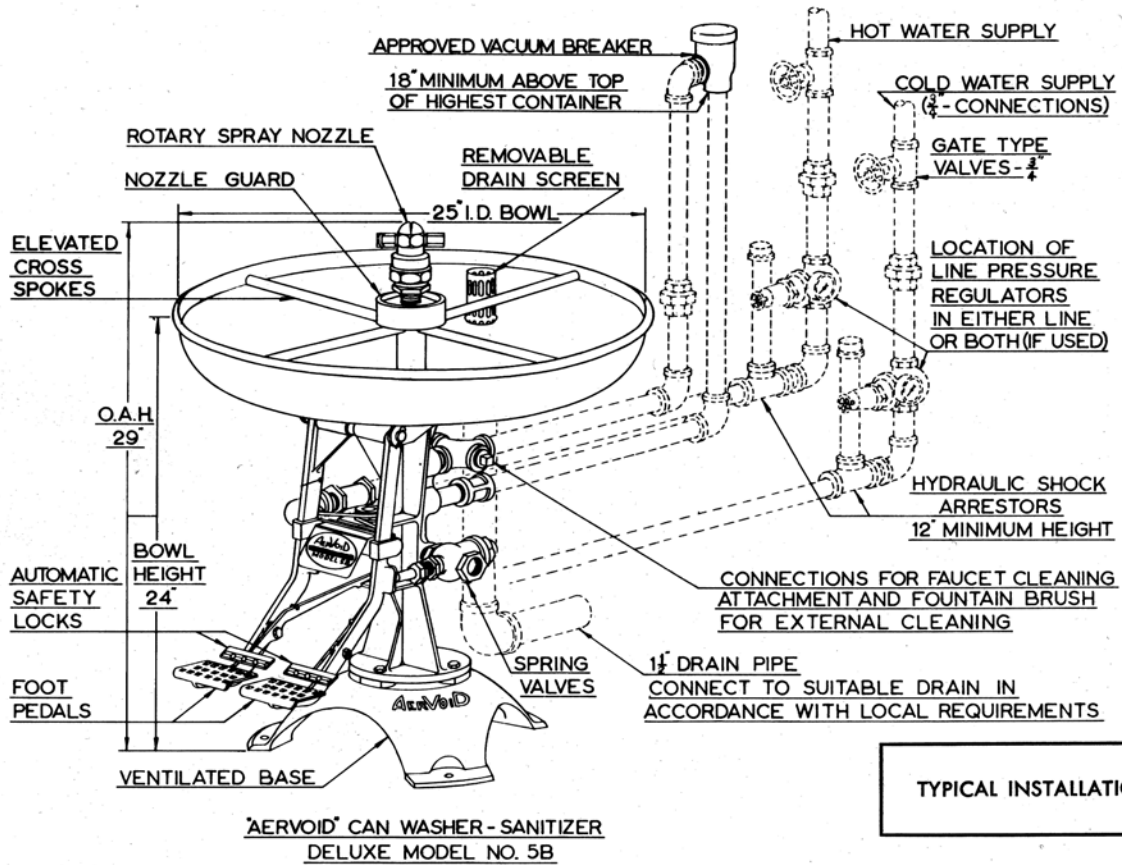


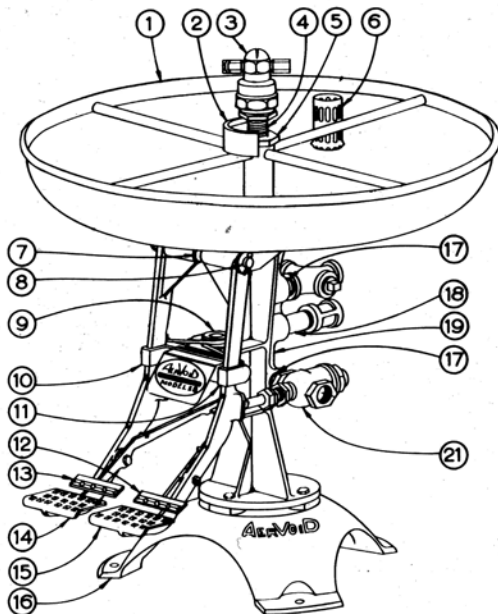
FIG. 1



TYPICAL INSTALLATION

FIG. 2

REPLACEABLE PARTS



DET. NO.	DESCRIPTION	PART NO.
1	BOWL ASSEMBLY 25"	SA-ST-1-5B
2	NOZZLE GUARD	ST-92-5A
3	ROTARY NOZZLE ASSEMBLY	SA-ST-34-5A
4	RISER TUBE	ST-59-5B
5	SPOKE HUB LOCKNUT	ST-174-5B
6	DRAIN SCREEN	ST-155-4A
7	PEDAL SPACER	OBSOLETE
8	PEDAL SHAFT	ST-147-5B
9	PEDAL RETURN SPRING ASS'Y.	ST-121-5A
10	PEDAL GUIDE BRACKET-LEFT	
11	PEDAL GUIDE BRACKET-RIGHT	ST-79-5B
12	SAFETY LOCK-RIGHT	ST-95-5BF
13	SAFETY LOCK-LEFT	ST-96-5BF
14	PEDAL-LEFT	ST-148-5BF
15	PEDAL-RIGHT	ST-62-5BF
16	BASE	ST-2-5B
17	NIPPLES (3) S.S.	ST-116-5
18	NIPPLES S.S.	ST-175-5B
19	PEDESTAL	ST-3-5BF
21	SPRING VALVES (2)	ST-12-5B

OPTIONAL PARTS

CHECK VALVES (2)	ST-143-4A
VACUUM BREAKER	ST-156-4A

FIG. 3

**"AERVOID" CAN WASHER-SANITIZER
DELUXE MODEL NO. 5B
DIMENSIONS FOR INSTALLATION**

